

SNPP 2013-05-20 Flight
S-HIS BT Plots, Including Turn Regions
(No Roll and Pitch Filtering)

UW SSEC



THE UNIVERSITY
of
WISCONSIN
MADISON



ER-2 Track Near CART Site and Moore OK

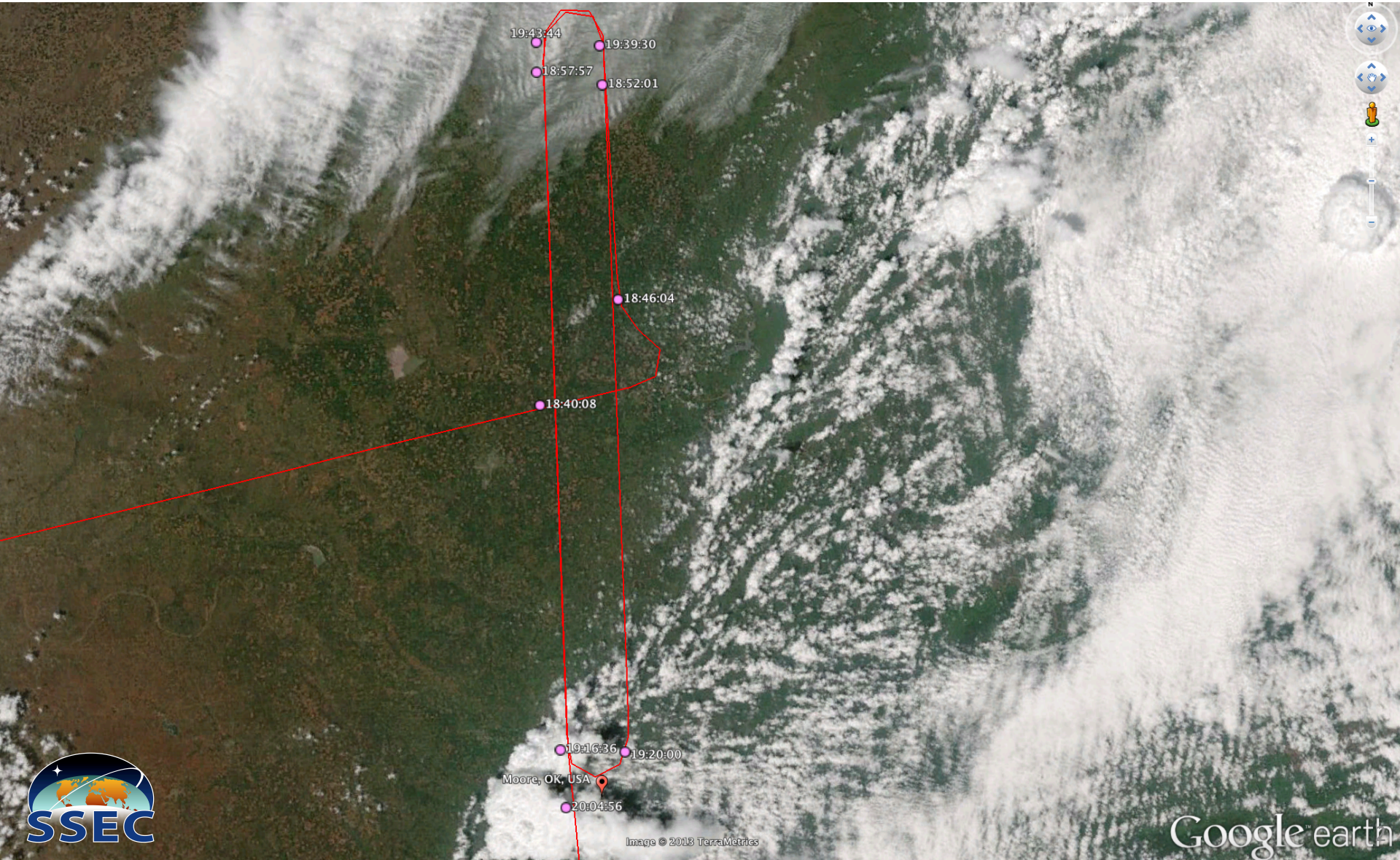
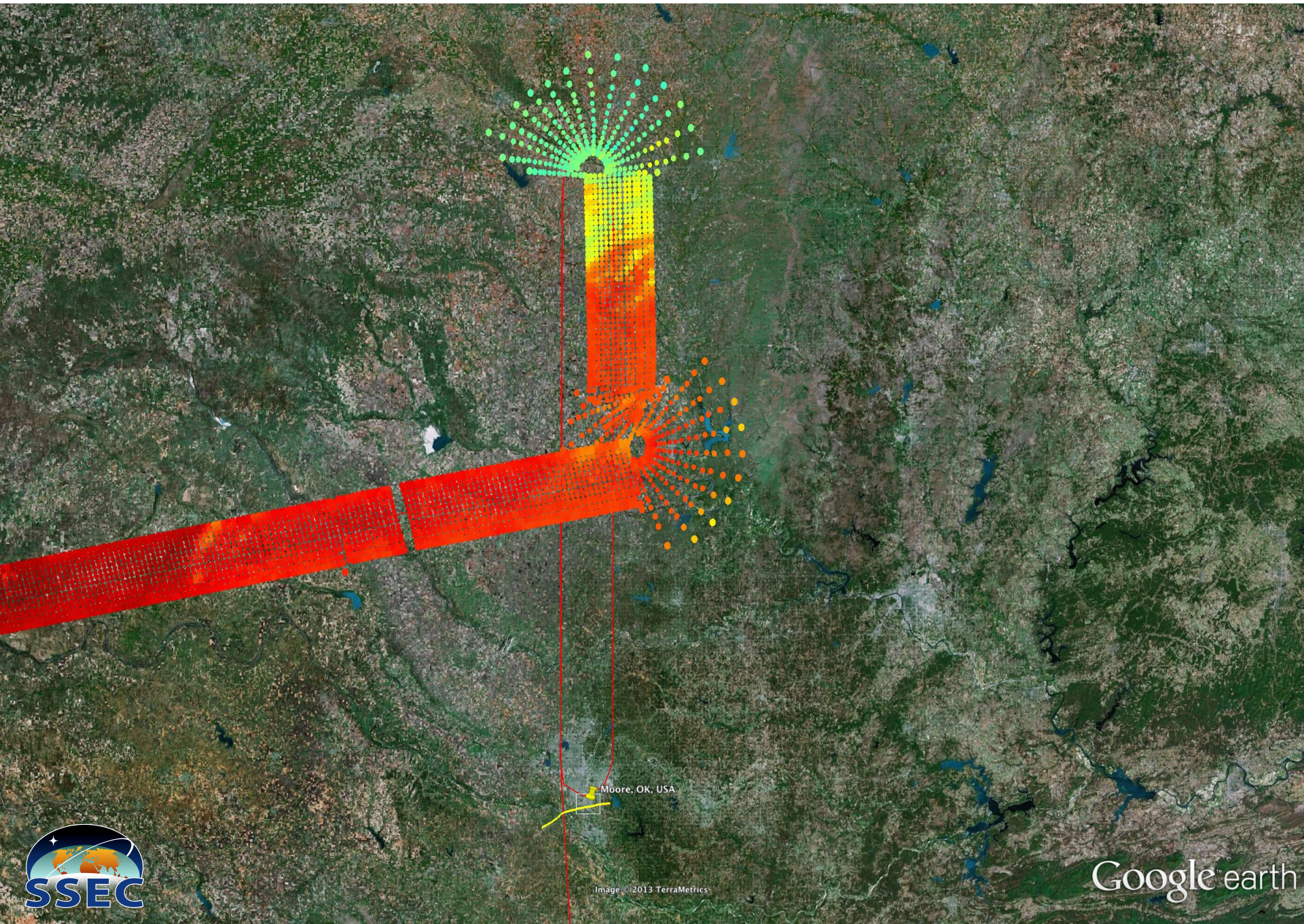


Image © 2018 TerraMetrics

Google earth

S-HIS 895-900 cm^{-1} Brightness Temperature (200 – 320K)



S-HIS 895-900 cm^{-1} Brightness Temperature (200 – 320K)

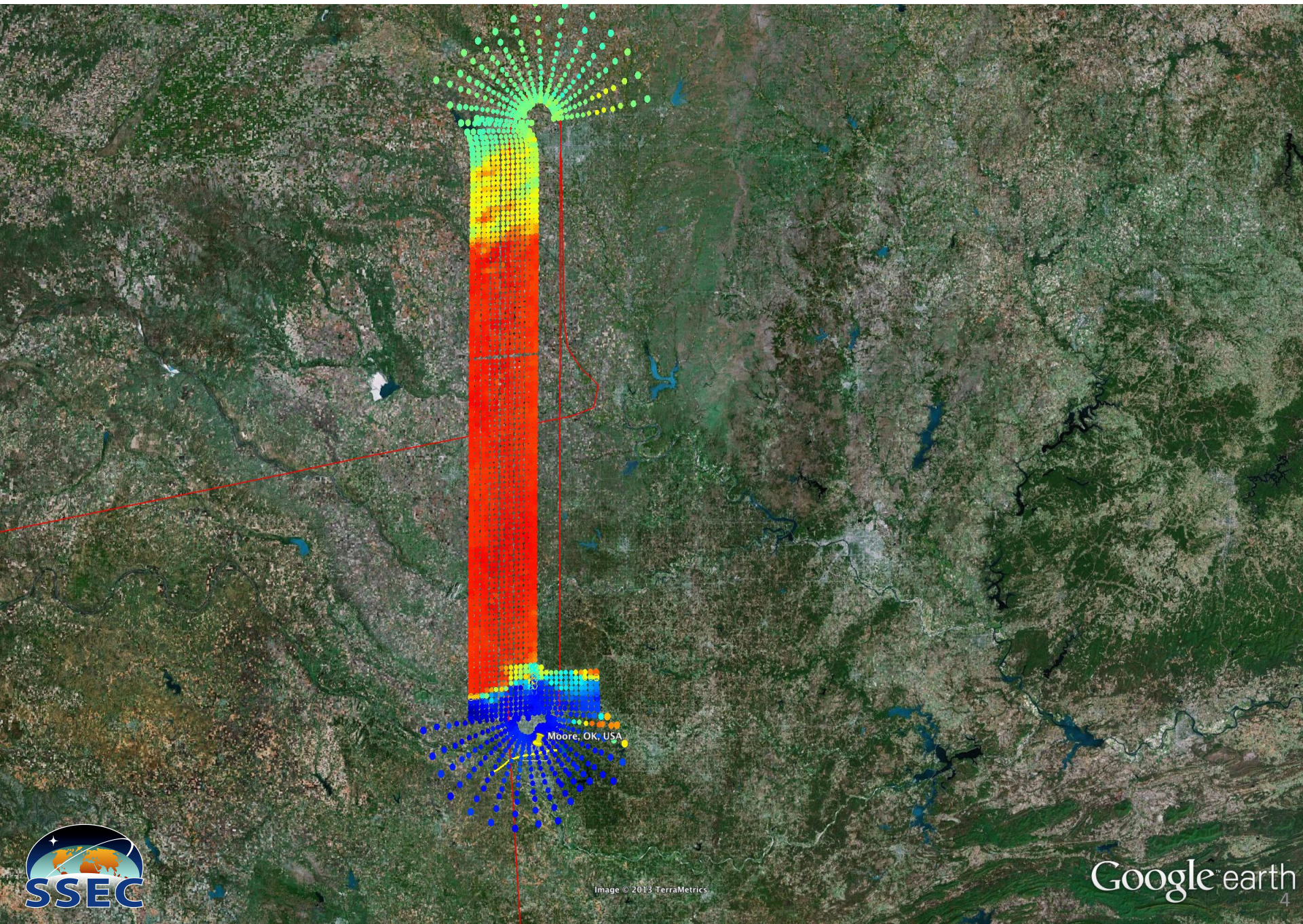
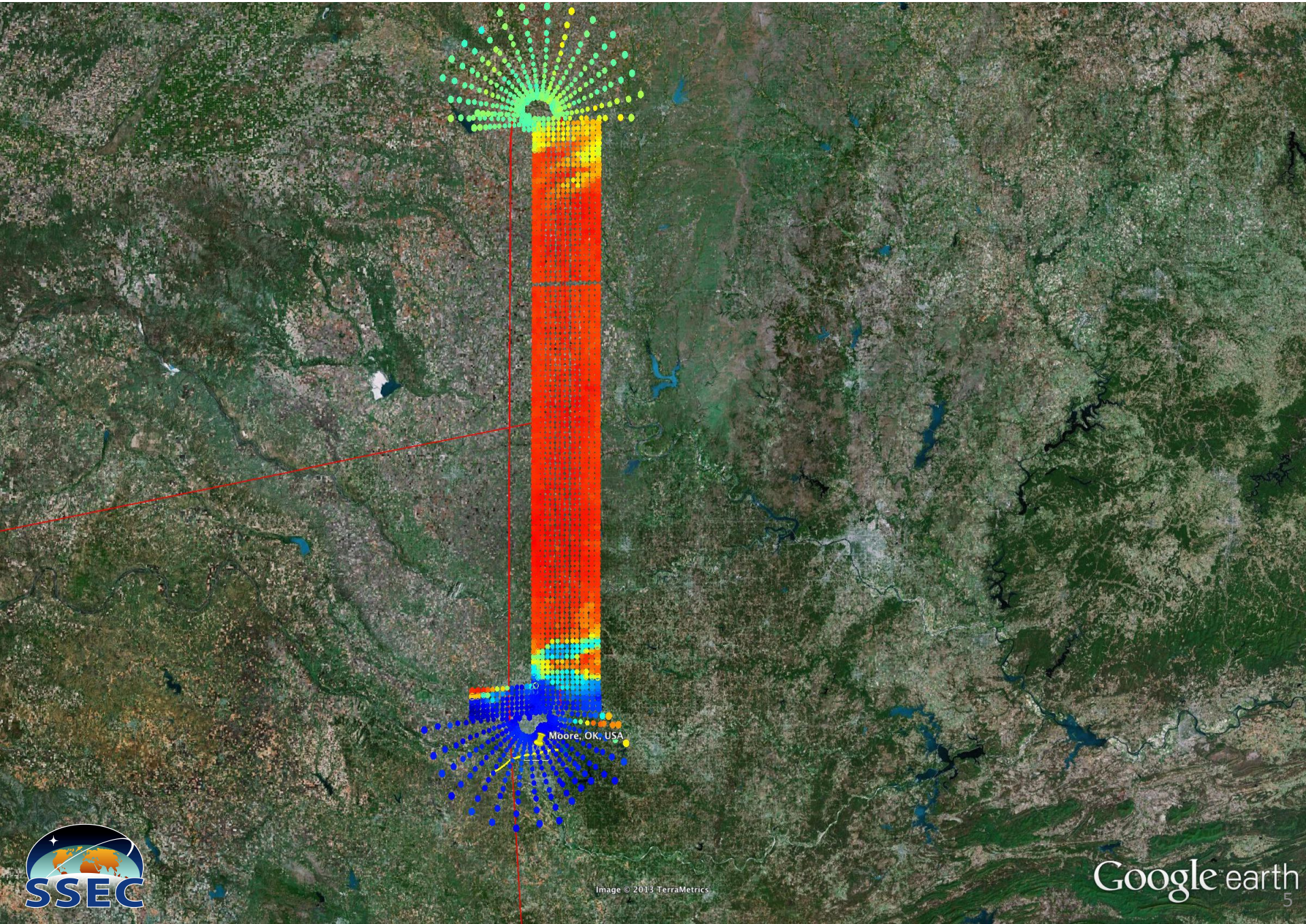


Image © 2013 TerraMetrics

S-HIS 895-900 cm^{-1} Brightness Temperature (200 – 320K)



S-HIS 895-900 cm^{-1} Brightness Temperature (200 – 320K)

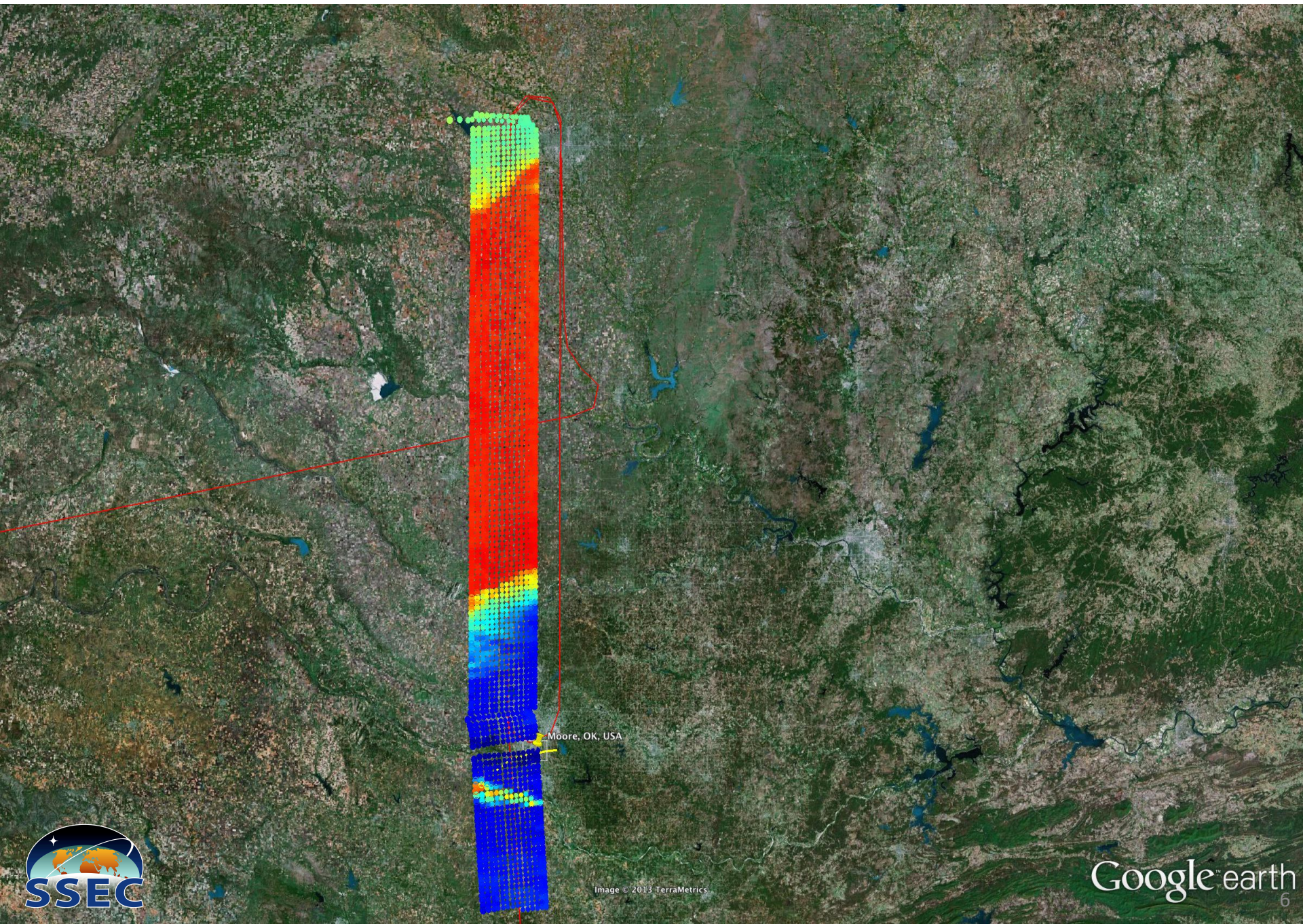
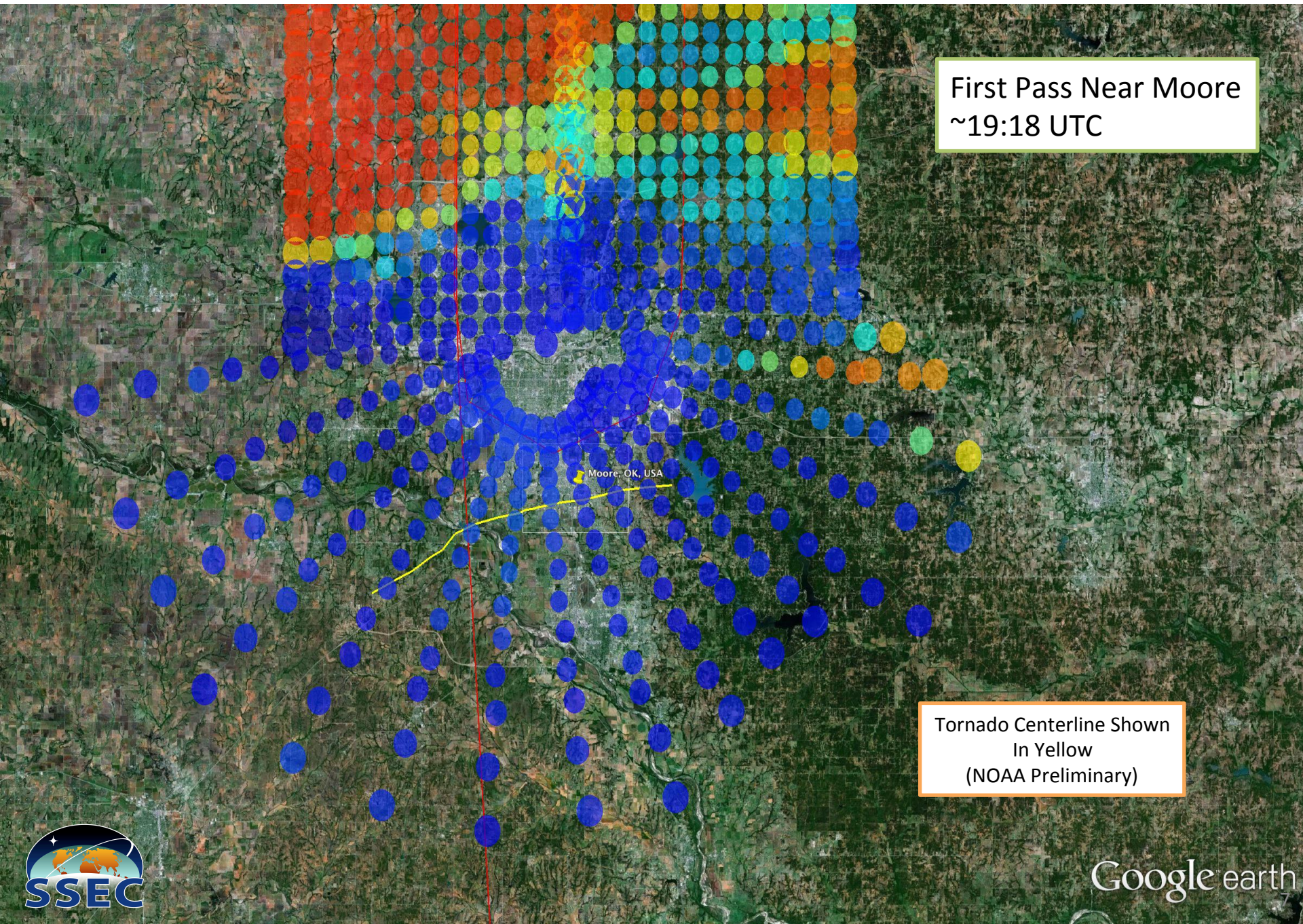


Image © 2013 TerraMetrics

S-HIS 895-900 cm^{-1} Brightness Temperature (200 – 320K)

First Pass Near Moore
~19:18 UTC

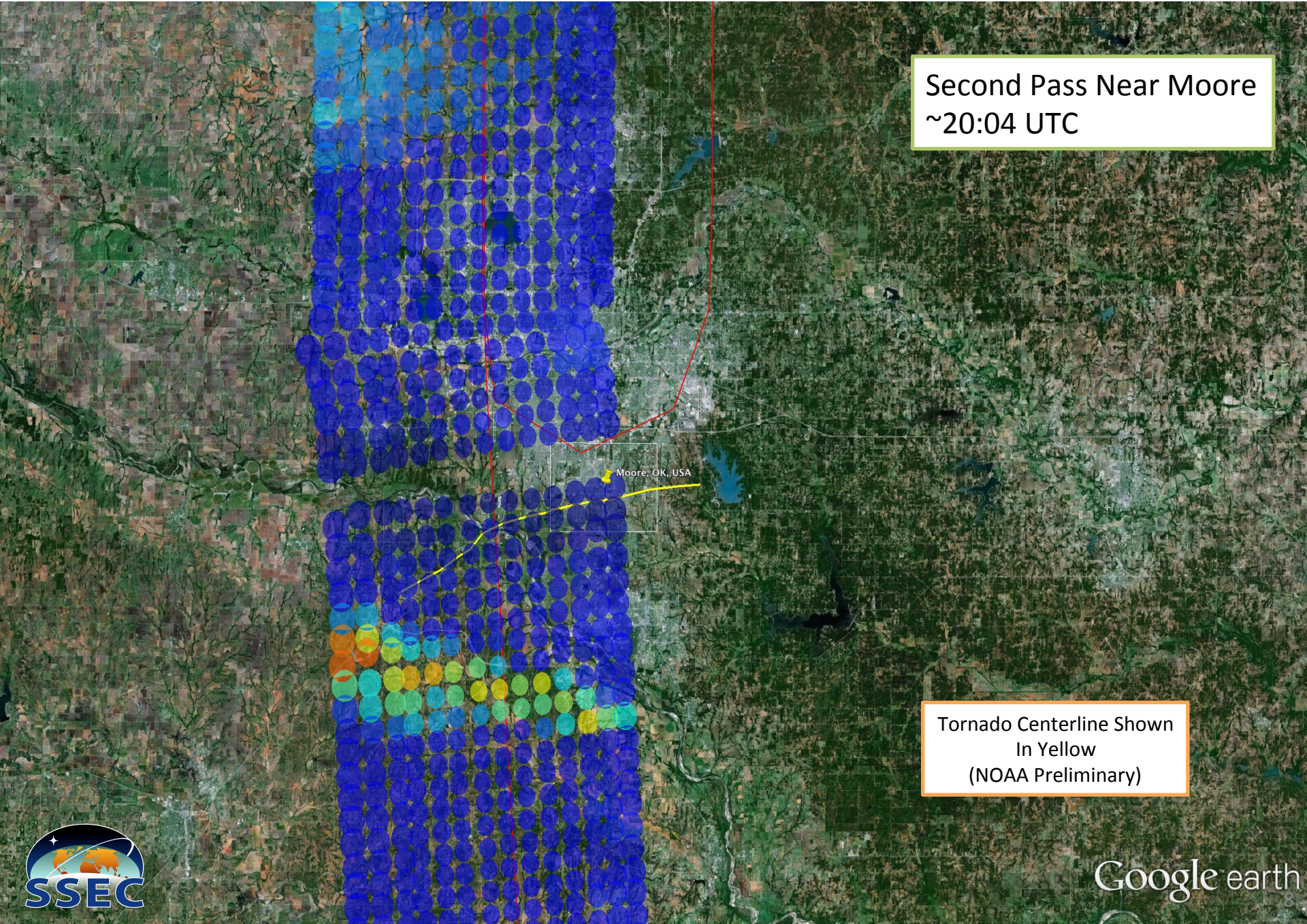


Tornado Centerline Shown
In Yellow
(NOAA Preliminary)



S-HIS 895-900 cm^{-1} Brightness Temperature (200 – 320K)

Second Pass Near Moore
~20:04 UTC



Tornado Centerline Shown
In Yellow
(NOAA Preliminary)